



GE SERIES

SNAP-IN MOUNTING HIGH PERFORMANCE IEC CONNECTOR FILTERS



INTRODUCTIONS

1. Snap-in mounting type to reduce labor cost. Compact and reliable at low cost.
2. Bleeder resistor can be added with suffix "-R" on part numbers, except G3H, G3V, W3V, G3J, W3J, types.
3. Optional side snap-in mounting clip type with suffix (H) on part numbers.
4. All part numbers are UL recognized, CSA certified and VDE approved.
5. With optional Y-Cap from 100pF to 3300pF.

COMPONENTS

PART NO.	Cx (uF)	L (mH)	Cy (pF)	R (Ω)
01GENG3E/W3E/-R	0.1	6.5	2200	1M
03GENG3E/W3E/-R		2.5		
03GENG3U/-R		2.5		
•03GENW3ES/-R		2.5		
•03GENG3Q/W3Q/-R		4		
06GENG3E/W3E/-R		0.8		
06GENG3U/-R		0.8		
••06GENG3Q/W3Q/-R		1.5		
06GENW3ES/-R		0.8		
10GENG3E/W3E/-R		0.2		
•••10GENG3C/W3C/-R		0.4		
*10GENG3Q/W3Q/-R		0.3		
10GENG3U/-R		0.3		
10GENW3ES/-R		0.2		
**15GENG3E/W3E/-R		0.2		
***20GENG3E/W3E/-R		0.3		

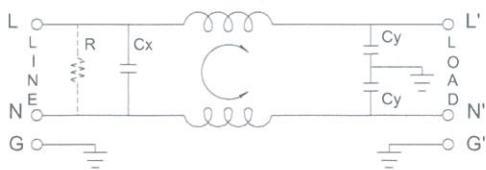
• UL, CSA approved to 4A 115/250V
 •• UL, CSA approved to 8A 115/250V
 ••• VDE approved to 8A/250V

* UL, CSA approved to 13A 115/250V
 ** VDE approved to 10A/250V
 *** VDE approved to 16A/250V

MINIMUM INSERTION LOSS IN dB

CURRENT RATING	COMMON MODE (L-G) IN 50 OHM SYSTEM					
	FREQUENCY-MHz					
	.15	.50	1.0	5.0	10	30
1A	28	35	38	38	40	40
3A	20	25	30	38	40	40
6A	12	18	24	35	40	40
6A (G3Q)	15	20	24	35	40	55
10A	4	10	13	28	35	40
10A (G3C)	10	15	15	25	30	35
10A (G3Q)	10	12	15	30	32	45
15A	4	10	13	28	35	40
20A	8	10	15	25	30	35

ELECTRICAL SCHEMATIC



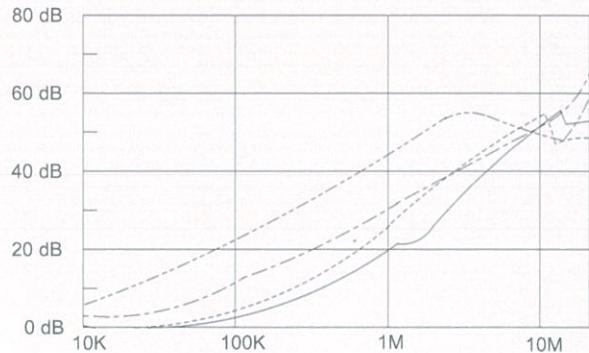
R: 1MΩ/-R ONLY

SPECIFICATIONS

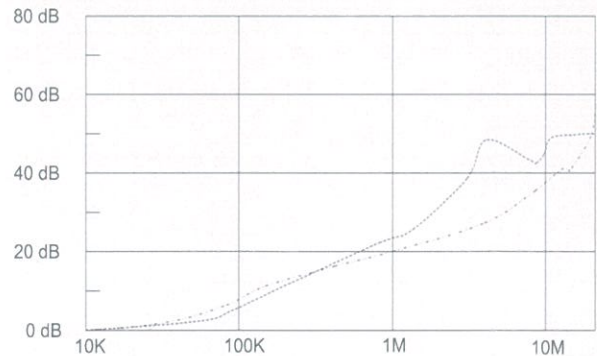
1. Maximum leakage current each line-to-ground @ 115VAC 60Hz: 0.2mA @ 250VAC 50Hz: 0.4mA
2. Hipot rating (one minute) line-to-ground: 2250VDC line-to-line: 1450VDC
3. Operating frequency: 50/60Hz
4. Rated voltage: 115/250VAC

INSERTION LOSS (TYPICAL)

03GENG3E ----- COMMON MODE ----- DIFF. MODE
 06GENG3E ----- COMMON MODE ----- DIFF. MODE



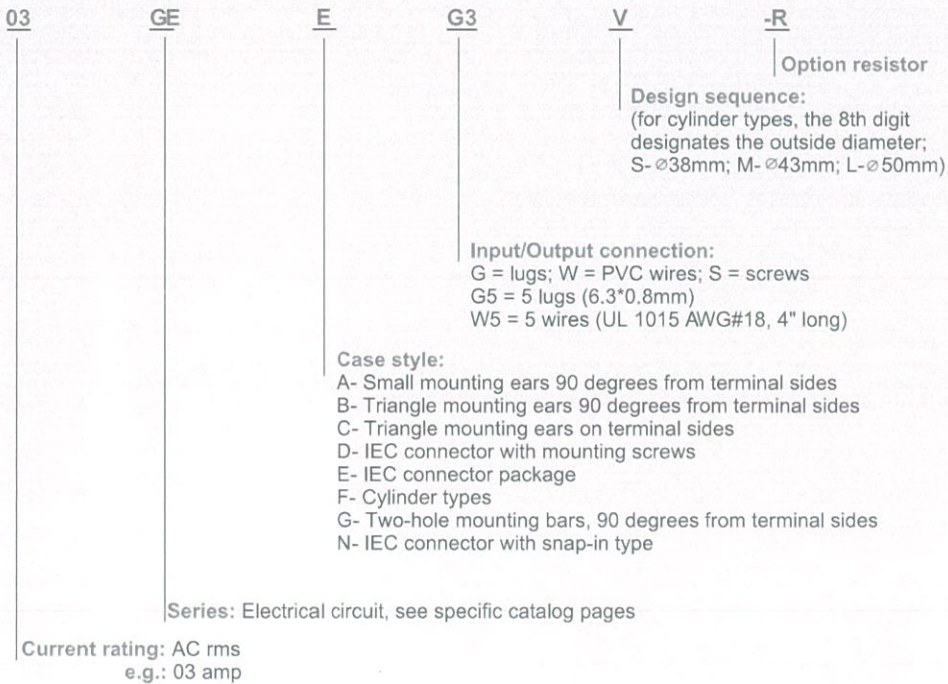
20GENG3E ----- COMMON MODE ----- DIFF. MODE



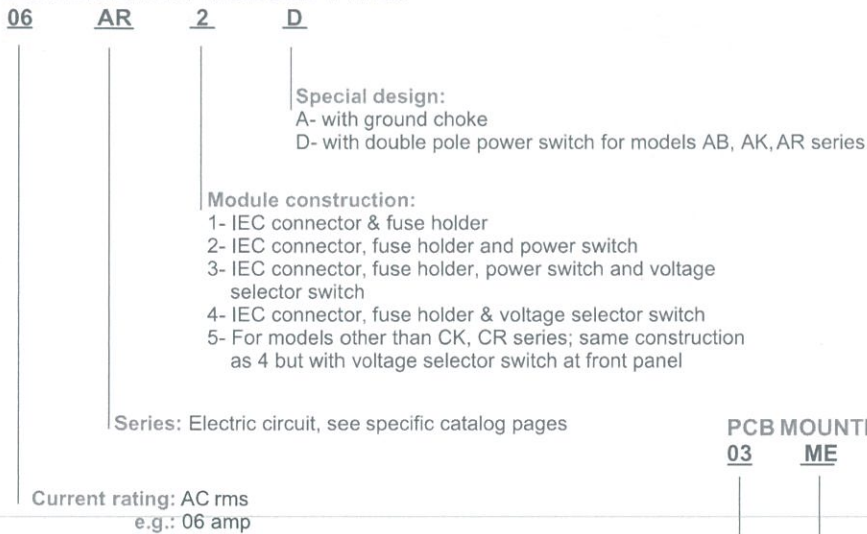
IEC INLET FILTERS

DELTA PARTS NUMBERING SYSTEM

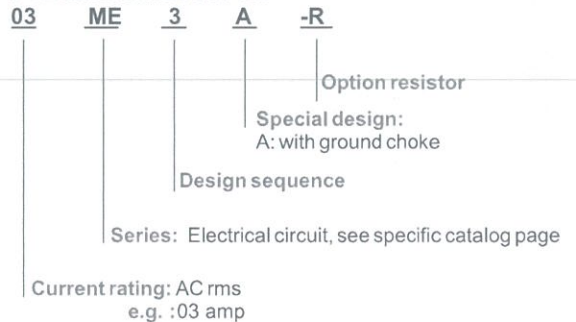
MODELS OTHER THAN POWER ENTRY MODULE TYPES AND P.C. BOARD MOUNTING TYPES



POWER ENTRY MODULE TYPES



PCB MOUNTING TYPES



DELTA PARTS NUMBERING SYSTEM

3-Phase Types

10

TD

S6

D

Special Design:
Dual: diff. and common choke

Input/Output connection :

G = lugs; W = PVC wires; S = screws; T = terminal blocks

e.g.

G6 = 6 lugs

W6 = 6 wires

T2: 2 terminal blocks

TIW4: 1 terminal block / 4 wires

Series:

TD: used in "Δ" system

TDH: used in "Δ" system

TDR: used in "Δ" system, vertical style

TDV: used in "Δ" system, vertical style

TDS: used in "Δ" system, screw style

TY: used in both "Δ" & "y" system

TYS: used in "Δ" & "y" system, screw style

TYT: used in "Δ" & "y" system terminal block style

PT: P.C.B. Filter

PY: P.C.B. Filter

Current rating: AC rms
e.g.: 10 amp

